

Nuntii Botanicart

Stop Press:

October workshop- a few spaces still available : Nature in Monochrome led by Sheila Hardy. Saturday 5th October 10am-4pm at Queen Margaret University. EH21 6UU – free parking on site. Bookings to Mrs Anne Carlaw annecarlaw6@gmail.com Members £45.

Botanic cottage RBGE forum events (contributors to be confirmed): also open to non-members

20.2.20 – reschedule of Botanic Gardens Library visit (restricted to 20 people)

14.5.20 – Eleanor Christopher – Slow Art for Fast Lives

17 .9.20 – to be confirmed

05.11.20 –to be confirmed.



The 4th Annual exhibition: 'Nature's Designs', our Fourth Annual Exhibition by the SSBA members. The Whitehouse Gallery, Kirkcudbright, is our gracious host for our biggest exhibition to date.

Over sixty-five paintings, including many new works never before exhibited, will be travelling down to beautiful Dumfries and Galloway next month. Make your plans now to visit! From Saturday 12th October to Saturday 2nd November, Monday to Saturday, 10 – 5 Free admission
47 St Mary's Street, Kirkcudbright, DG6 4DU

Christmas party (members only) - 5th December 5-7.30 pm at the Botanic cottage

Call for Entries



Royal
Botanic Garden
Edinburgh

To celebrate an important milestone of 350 years, the RBGE is mounting a botanical art exhibition in 2020. Paintings of plants from its living collection will first be exhibited, then form part of a new Florilegium in the Library collection. The online Gallery provides image and artist profiles.

24 July 2020. Submission of digital images for selection by jurors.

See website for rules, sizes, Copyright information, list of plants and Gallery:
<https://www.rbge.org.uk/science-and-conservation/library-and-archives/library-collections>
Artists' Contact: Sarah Howard at florilegium@rbge.org.uk

Contents

Painting days – page 2
 SSBA exhibitions – page 2
 Book review – page 3
 Call for entries – page 4
 Annual members garden visit – page 5
 Painting buddy- page 6
 Art classes – page 7
 Galleries –page 3 onwards

SSBA October Exhibition 2019

'Nature's Designs', our **Fourth Annual Exhibition** by the SSBA members. **The Whitehouse Gallery**, Kirkcudbright, is our gracious host for our biggest exhibition to date.

Over sixty-five paintings, including many new works never exhibited before, will be travelling down to beautiful Dumfries and Galloway next month. Make your plans now to visit!

From Saturday 12th October to Saturday 2nd November,
 Monday to Saturday, 10 – 5
 Free admission
 47 St Mary's Street,
 Kirkcudbright, DG6 4DU



From your newsletter editor - welcome to the Autumn 2019 SSBA newsletter.

You will have seen from the website and from the e-mails from the SSBA secretary that several of our projects are beginning to move forward. The buddy system has commenced and we already have several buddies working together. If you wish a buddy please contact Kathy Munro Secretary who is co-ordinating this. Details of the role of buddy's can be found later in the newsletter. Outreach /events group are planning the schedule for next year and this will be with you before Christmas. There is also going to be an on-line survey questionnaire as part of the outreach evaluation and we would value you completing this for us. The link will be sent to you individually by the Secretary and it is anonymous so you can be as honest as you wish.

Painting days have been established again, with a small group currently meeting at the West at Kilmardinny House Arts Centre in Milngavie on one Tuesday a month. The east of the country has not been neglected and painting days are now being held fortnightly on Wednesday's in Saughton Park. At present the conservatory is the venue however we hope in time that this will move to the McHattie room once it has received final sign offs by the Council.

This edition we have a book review of Isik Guner's book done by Sarah Sherlock. As always a huge thank you to those of you who have contributed reports, reviews and other items for inclusion in this newsletter BUT as always we do need others to send me materials throughout the year to allow the newsletter to flourish. Let's hear from anyone who has been to something interesting to see or knows about an exhibition or even wants to share a little of their own experiences.

Don't worry about your journalistic skills everything will be of interest.

As you know – it will only be as good as the contributions from **all members** so can I encourage you to send me materials **at any time of year** for inclusion in the next edition.

I can be contacted on newsletter@thessba.org

The link to the SSBA website is here: www.thessba.org

**Sign up for the free
artwork newsletter**
www.artwork.co.uk

Exhibition and events news

NORTH

Orkney

The Pier Arts Centre (28-32

Victoria Street Stromness) is an
Art Gallery and Museum in
Stromness, Orkney.

<http://www.pierartscentre.com>

Open Mon-Sat 10.30am-5pm

Admission Free

Beyond Landscape

- Saturday, April 6, 2019 2:30 PM
- Saturday, November 9, 2019 3:30 PM



Winifred Nicholson Sounds of Rhum, from
Bay of Laig, Isle of Eigg (The Singing Sands)
early 1950's

Orkney Art Galleries

<http://www.orkney.com/about/culture/museums-galleries>



If you are reading the newsletter electronically then this will take you to the site if you click on the web address. Alternatively type it into your web browser search box.

Painting days

Kilmardinny House painting dates: the following dates have been booked for 2020: -

14.1.20, 28.1.20, 18.2.20, 25.2.20, 10.3.20 and 24.3.20.

Please contact your local representative Ann MacCalman annv.maccalman@gmail.com to book a place.

Saughton Park dates – McHattie Room: the following dates have been booked for 2020: -

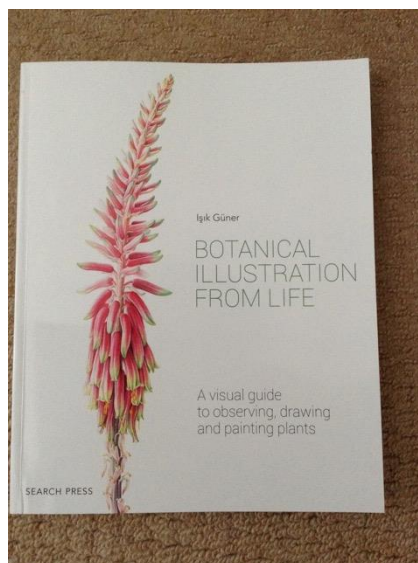
15.1.20, 22.1.20, 29.1.20, 5.2.20, 19.2.20, 26.2.20, 4.3.20, 11.3.20, 18.3.20 and 25.3.20.

Please contact your local representative Kathy Munro munrokm@btinternet.com to book a place.

Costs of sessions are dependent on numbers attending.

If you like to set up a local group or/and would like support to do this please contact one of the committee who will be able to advise you.

Book review



Botanical Illustration
from Life: A visual guide
to observing, drawing
and painting plants by
Işık Güner
Search Press, UK,
2019. 208pp. £17.99

Işık will be in Turkey, on
the Aegean coast in
November 2019. If you
would like to holiday in
Turkey and paint its
flora under the eagle
eye of a practitioner
who combines
exceptional art skills

and local botanical knowledge, then you might wish to join her.

If you cannot, then by buying her book to add to your collection of 'how to' books currently in print, you can still benefit from her experience and knowledge. Uniquely, Işık impresses on her readers' the importance of field observation; connecting art with the ecosystem. She emphasises studying the techniques of different contemporary artists and she provides a welcome list of plants used in the illustrations as reference.

Shetland



Shetland arts

<https://www.shetlandarts.org/venues/bonhoga/exhibitions>



The Shetland Gallery

<http://www.shetlandgallery.com>

Sellafirth,
Yell,
Shetland
ZE2 9DG
Tel: 01957 744 259



Email: shona@shetlandgallery.com

Open:

Easter until end September, or by appointment (Tel: 01957 744 386)

Opening Hours:

Tuesday to Saturday – 11am to 5pm
Sunday – 2pm to 5pm
Closed Mondays

Inverness and environs

Işık, is well known in Edinburgh as a tutor at the RBGE and illustrator of the beautiful RBGE publication, 'Plants from the Woods and Forests of Chile' by Martin Gardner. She also a Gold Medallist at Botanical Illustration Scotland (BISCOT) and the Royal Horticultural Society (RHS) and has contributed to the Transylvania Florilegium and much else.

Trained originally as an environmental engineer and brought up in Istanbul by a botanist parent, Işık encourages her readers to study the plants around them to understand their connections within the ecosystem – a thoroughly enlightened approach, that gives existential meaning to our work as botanical artists. Her methodical approach, fierce insistence on accuracy and continuing personal learning are all underlined in her book.

Işık writes like an encouraging tutor, addressing you personally.

In a chapter entitled 'Finding Solutions' she suggests applying lateral thinking to problems, illustrating this by giving a



fascinating description of an intriguing problem she had in depicting the thick hairy stem of *Eria lasiopetala*.

All conventional methods failed until she picked up a needle and gently prised out fibres of the paper, finishing them with white paint.

Those of us who have been taught by her, will recall her glazing technique that employs two brushes, a glass of clean water and another for dirty brushes, a scrupulous wait before applying the next layer – often lost on this impatient and clumsy reviewer, but lends itself to beautiful tonal gradations.

Işık generously shares her own experience with other contemporary botanical artists (among them, Akiko Enekido, Lizzie Sanders and Jacqui Pestell) and gains inspiration from their differing techniques.

This book won't break the bank, but has gold between the pages and certainly challenges one as an artist in terms of on-going development and skill. Perhaps it could be an addition to your Christmas gifts wish list.

Sarah Howard
September 2019

Castle Gallery
43 Castle Street
Inverness
IV2 3DU
01463 729512
Open Mon-Sat 9-5



Winter Mixed Exhibition
1st October - 31st December
Our winter mixed exhibition features a carefully curated selection of paintings, handmade prints, jewellery and crafts that you won't find anywhere else in the Highlands.
We have all our existing artists as well as some new for you to browse around over the coming months in the lead up to the festive period.
<http://www.castlegallery.co.uk>


Golspie Gallery

Unit 9, Main Street, Golspie,
Sutherland KW10 6RN
<https://www.golspiegallery.co.uk>

kilmorack gallery
by beaully
inverness-shire iv4 7al



You put the magnifying glass up to a Robert Powell etching and what do you see? It's always eye-poppingly detailed and enlightening: an over-crowded island after the flood, Daphne escaping Apollo's advances by turning into a laurel, wildmen, a



Royal
Botanic Garden
Edinburgh

Call for Entries

350 years celebration exhibition at the Royal Botanic Garden Edinburgh, 2020

Deadline for submission of digital images 24 July 2020

The RBGE is collecting original contemporary botanic art from across the world for a Florilegium that reflects its long history of scientific and horticultural work. Artists are invited to paint plants that are grown in the garden, either from a specific wish list found online; or from the Living Collections database, which is also online.

Selected works for an exhibition in autumn 2020 will be included in the Library's on-line database, together with artists' profiles. Prizes will be awarded for outstanding work. Artists are expected to donate their paintings, together with reproduction rights, if selected.

Local artists may draw and colour match their subject at the RBGE. Otherwise, the provenance, whether commercially grown, from the wild, or in another collection, must be clear.

Requirements: Paintings must conform to any of 3 window sizes; they must be 2-dimensional (no photography); good quality digital images must be submitted for selection. There is no fee.

For further information, advice, and to register interest in a particular subject, contact Sarah Howard at florilegium@rbge.org.uk

Website for rules, requirements, Copyright information and gallery of work from the 2019 launch exhibition is at:

<https://www.rbge.org.uk/science-and-conservation/library-and-archives/library-collections>

The annual members garden visit 2019: at Anne Carlaw's house in Kinghorn on June 8th.

city of mirrors, an oligarch on tour, a vain architect. These are some of the best stories ever told, and in them Powell shows us fantastical follies and strange human achievements. It is hard not to smile.

<https://www.kilmorackgallery.co.uk/exhibitions/>

Highland Print Studios Inverness



<http://highlandprintstudio.co.uk>

North East

North East open studios

www.northeastopenstudios.co.uk

Gallery Heinzl

<http://www.galleryheinzl.com>

Gallery Heinzl specialises in contemporary Scottish art including paintings, sculpture, ceramics and glass.



24 Thistle Street
Aberdeen
AB10 1XD

Telephone: 01224 625629

Email: info@galleryheinzl.com

North West

Lime Tree An Ealdhain gallery

<https://www.artfortwilliam.co.uk>

Is a purpose built Gallery space in **Fort William, Scotland** in the heart of the Highlands



Sadly, the weather was not so kind for this event- however after last year's exceptional sunshine maybe we were expecting too much. On a dullish, grey day we still had a marvellous time, and with many plants of diverse and unusual nature to buy – it was a plantaholic's (like me) treat – a bit like being in a sweetie shop. Visiting members brought plants with them as well so much exchanging was done. Anne's garden never ceases to amaze me, in terms of what has been achieved on a challenging site, and how she finds the time to do this along with her art and other activities (including puppy sitting).

We managed to tour the garden between

showers, however, the jackets and hats said it all!

Much chat and sharing of ideas was done over coffee, cake and other delicious eats in the kitchen, and with about a dozen people there, there was a fantastic atmosphere of friendship. Do try to join us for the 2020 visit.



Lindesay Irvine
September 2019

The Annual members garden event: date - 23 May 2020 12 – 4 pm 71 Toll House Gardens EH33 2QQ

For 2020 the garden being visited will be Kathy Munro and Lindesay Irvine's garden in Tranent, East Lothian. This garden was started from scratch 10 years ago 6 months after the house was built. Formerly farm land of a relatively poor nature and on a windy site (the area is called Windygoul!) plus the debris from the builders, has proved an interesting challenge. Lindesay is particularly fond of Iris Siberica, and has grown to also appreciate the bearded varieties. Kathy's special favourites are peonies (both tree and herbaceous). Come and see what else is there!! Small plant sale and refreshments available.

THE BUDDY ROLE

Our 'Painting Buddy system' -What is a Painting Buddy?

A **Botanical Artists Painting Buddy** will provide you with information and help as new member of the SSBA . Typical things that a buddy can help with might include:

The Gallery hosts exhibitions from National Touring collections in partnership with the An Ealdhain Arts Trust - a Scottish Charity which promotes visual arts development projects in Fort William. The Gallery has on display a permanent collection of David's original paintings, prints and stained glass.

Isle of Mull

An Tobar gallery, Comar,
Druimfin, Tobermory
Isle of Mull
PA75 6QB



YELLOW
An Tobar's Winter Open
Exhibition
2 November - 21 December
2019

Artists from Mull, Iona and Argyll
are invited to submit New Work
using the theme YELLOW.
<http://www.comar.co.uk/about/venues/tobar>

Outer Isles

Ardbuidhe Cottage Gallery
A warm welcome awaits at the
Studio/Gallery of Willie and
Moirra Fulton.

The gallery is located in the
Bays area of Harris along the
Golden Road at Drinishader.



- accompanying a new member to an event or exhibition
- introducing the new member to people
- providing information about digital scanning art work
- providing information about producing cards and prints
- helping a new member with an exhibition entry
- knowing where to get art materials

So, what's special about a Painting Buddy?

Enthusiasm for all things botanical art is priceless and such a buddy can help a new member feel welcomed and included in the activities of the SSBA. Getting to know other members through informal support and social network is a great starting point for general questions. Buddies are good and will happily share their botanical art knowledge and experiences, but sometime can't answer all your questions – but they will know someone who can!

How do I find a Buddy near me and how do I get in touch?

A buddy can be located as near to your geographical locality as possible, or it can be someone who can contact you using social media or facetime if you live in an isolated part of the UK or abroad.

Knowing who is near you is the role of the Secretary who has a list of all members and those willing to act as a buddy and the Secretary will contact you after

a) you ask for a buddy and

b) confirm that are willing to share your contact details

It will be up to you and your buddy to agree how and when you meet, or communicate, and if you wish to continue – it may be for a couple of months initially but it is not time limited. In other words you both agree your own ground rules

Please contact secretary@thessba.org to locate a Painting Buddy.

ART COURSES

Drawing and Painting Trees: Bill Phillips

Email: willie@williefulton.com
Web: www.williefulton.com

An Lanntair,

Kenneth Street, Stornoway, Isle
of Lewis, HS1 2DS

12 OCT - 16 NOV

NALINI: ARPITA SHAH



02 Lotus Pond 08 001

A deeply personal photo-essay
of

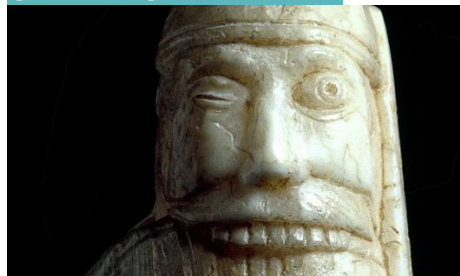
family across continents that
explores the shared narratives
of

migration and the Indian
Diaspora

Admission: Free

<http://lanntair.com/events/category/visualarts/>

GRINNEAS NAN EILEAN



25 Nov – 18 Jan 2020

Preview: Sat 23 Nov 2019

The Islands Open exhibition
returns! Multiple works in
multiple genres by artists resident
or from the Outer Hebrides. This
year Grinneas nan Eilean the
Islands' Open exhibition returns
to An Lanntair with a new added
dimension. Grinneas na h-Òigridh
will give under 18s the
opportunity to contribute with a
special section of the show. GnE
and GnO, if you will.

Submission deadline 16th Nov:

[Download your Grinneas Nan](#)

Birnam Institute Workshop:
20th October

Later this month, I am
running a workshop as
follows:

Birnam Institute, Saturday
20th October 2018 10 am - 4
pm £45

The botanical artist's take on
drawing and painting trees,
with a visit to study, sketch
and photograph the nearby
Birnam Oak, weather
permitting. Find out how to
create rendered graphite images and experiment with wet
on wet and dry brush watercolour techniques. Explore
methods of working from photographs. We will also take a
look at a selection of tree paintings by well known and not
so well known artists to see how they have approached
this fascinating subject.



**All materials can be provided, but bring your own if
you prefer. Sensible shoes, outdoor clothing and
bring your camera.**

Price includes a Soup and Sandwich Lunch

To book, telephone the Birnam Institute on 01350 727674

MAKE THE MOST OF WATER-SOLUBLE PENCILS (EVERYTHING PROVIDED)

**October 20th at 18:30 to
October 22nd at 13:30**

An exciting and versatile
medium that can be used
solo or combined
with other materials. See
a variety of techniques,
from using pencils as a
source of paint to
creating a range of
textures and effects. Led
gently by a fabulous,
experienced Tutor.

Jane Beech (Cheshire www.highamhall.com/jane-beech)

Residential: £243 Non-residential: £176 (inc. materials)

Venue [Higham Hall College](#)

Bassenthwaite Lake

*Cockermouth, Cumbria CA13 9SH United
Kingdom*

Phone: 01768 776276

Website: www.highamhall.com



[Eilean entry form for 2019 here.](#)
[Download your Grinneas na h-Òigridh entry form here.](#)

For information on submission please email Head of Visual Arts Roddy Murray at roddy@lanntair.com

Uist Arts Association



The **Uist Arts Association (UAA)** was formed by a group of people interested in promoting and

facilitating the arts on the Uists. Artists, makers, writers, and those keen to support arts activities and appreciation, established the association in 1989.

<http://www.taigh-chearsabhagh.org/arts/>

CENTRAL



Firestation Creative
 Carnegie Drive
 Dunfermline

KY12 7AN
<http://www.firestationcreative.co.uk>
 e: info@firestationcreative.co.uk
 fb: [thefirestationcreative](https://www.facebook.com/thefirestationcreative)
 Twitter: @FireStnCreative
 Instagram: fire_station_creative
 t: 01383 721 564 Please leave a message.

Park Gallery

Callendar House
 Callendar Park
 Falkirk FK1 1YR
www.falkirkcommunitytrust.org/venues/park-gallery

EAST

D071: Introduction to Botanical Drawing – University of Strathclyde Centre for lifelong learning

Botanical Drawing & Painting

10 credits (Applied Arts)

As a beginner learn step-by-step aspects of practice in botanical drawing through tutor explanation and demonstration. Make aesthetically pleasing botanical drawings using hard and soft graphite pencils and fine liner pens. Gain confidence in drawing from life, understand how to use line, tone, form, pattern and texture effectively. Students are responsible for purchasing their own materials.

Further Information Links

[Art Materials](#): Click on the class materials

Key Information These classes are part of CLL's Daytime Programme and are aimed at those aged 50 and over.

Tutor: Elaine Woo Macgregor BA

OS Codes: OS196

Wed 03/10/2018 - Wed 05/12/2018

Meetings: 10

Wednesday (10.30 - 12.30)

The Hopkirk Building, Botanic Gardens, 730 Great Western Road, Glasgow, G12 0UE



TRY FOR A DAY:

BOTANICAL PAINTING FOR THE TERRIFIED

December 5th at 10:00 to 17:00

Higham Hall College, Bassenthwaite Lake Cockerthwaite, Cumbria CA13 9SH United Kingdom
 A (short and gentle) amble outside to photograph plants, taking Pencils to capture the chorus and do short sketches. These will then be developed using watercolours. Anyone

welcome, even if you feel you will be no good! All materials provided and you get to keep your sketchbook! Lis Bramwell (Cumbria www.highamhall.com/lis-bramwell) £76 (inc. materials, lunch and refreshments) Repeated 12 March. A next stage for the LESS TERRIFIED is on 28 January.

COLLAGE AND ACRYLIC WITH FRANCES WINDER

November 12th at 18:30 to November 15th at 13:30

Higham Hall College, Bassenthwaite Lake

Winter Showcase Exhibition

East Neuk Open Studios artists will be getting together for a weekend in November, to stage their **Winter Showcase Exhibition**

The venue is the **Parish Church Hall, James Street, Pittenweem** (on the main road through the village) and doors are open from **10.30am – 4.30pm** on **Saturday 16th** and **Sunday 17th November**.

Queen's Gallery

Palace of Holyrood House
Edinburgh



Russia Royalty and the Romanovs: 21 June – 3 November 2019
www.royalcollection.org.uk

SOUTH

Dawyck Botanic Garden

<http://www.rbge.org.uk/whats-on/event-details>



A professional artist for over twenty years, Tina Holley is known for her realistic watercolours. Her exhibition at Dawyck

will be drawing on her fascination with the effect of light on the landscape and the celebration of trees in all their different guises through the year.

Cockermouth, Cumbria CA13 9SH United Kingdom

Create and explore using collage to really free up your work. Extend your Acrylic vocabulary, build up surfaces



with gesso and use watercolour, impasto effects, rags and cards to paint as well as brushes and rollers. Frances Winder (S. Cumbria www.highamhall.com/frances-winder) Residential: £328 Non-residential: £229 Frances' work will be on exhibition at Higham 1 October 2019 to 31 January 2020.

Botanical Illustration Courses – Field studies council

These **botanical illustration courses** are designed to appeal to all those who enjoy the challenge of painting plants with accuracy and precision. Observation, drawing, colour mixing - and patience - are all skills that can be learned and practised. [Find out more about which botanical illustration course is suitable for you.](#)

The list below shows the current botanical illustration courses available. Full details of each of the *botanical illustration courses* can be found by clicking on the title.

2019 programme

- [Autumn and Winter Flora Illustration](#)
- Location [Margam Discovery Centre South Wales](#)
- Dates Fri 01 November - Sun 03 November
- Tutor Debbie Devauden
- Level Open for Everyone

2020 courses will be available online from 28th October!

Why choose an FSC botanical illustration course?

- Location: FSC Centres have been chosen for their stunning locations with amazing views and access to flora and wildlife, ensuring you make the most of your botanical illustration course
- Expert staff: FSC botanical illustration courses are led by expert tutors who are passionate and knowledgeable about the subject
- Suitable for everyone: botanical illustration courses are available at all levels whether you are a complete beginner or an experienced artist

Sunday 4th August 2019 -
Saturday 30th November 2019

Moy Mackay gallery

The Moy Mackay Gallery is situated in the heart of the beautiful town of Peebles, set in the rolling hills of the Scottish Borders.
<https://www.moymackaygallery.co.uk>

Castle Douglas Art Gallery

Market Street, Castle Douglas,
DG7 1BE. Enquiries 01557
331643.
Monday to Saturday 10.30am -
4.00pm.
The gallery is closed during
exhibition changeovers.
<http://www.dumgal.gov.uk/artsandmuseums>

WEST

See right hand column.

Paisley Art Institute

131st Annual Exhibition
07.09—20.10.19 **The Piazza,**
Paisley

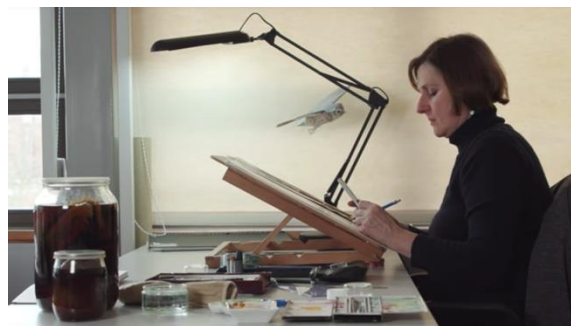


Paisley Art Institute (PAI) is breaking new ground this year for its **131st Annual Exhibition**. In a bold move it has secured a temporary venue for this year's exhibition in central Paisley in a vacant supermarket located in **The Piazza** shopping centre. Due to the closure and major refurbishment of Paisley Museum & Art Galleries, the PAI

Intermediate botanical illustration – Kew Gardens

An excellent opportunity to develop your skills alongside a professional botanical artist.

Principal
Tutor: Lucy
T Smith



About the course

DATE AND TIME

Monday 28 October — Friday 8 November 2019
or Monday 24 February — Friday 6 March 2020
10.30am — 4pm

LOCATION

Kew Gardens

PRICE

£750 (£695 concessions, Kew Gardens Members)
Deposit payable on enrolment: £150

MAXIMUM CAPACITY 15 places

This 10-day course provides an opportunity to gain a deeper insight into the work of botanical illustrators at Kew and the methods and materials they use.

Precision is the hallmark of the best botanical illustration and a range of relevant techniques will be demonstrated and taught. Accurate drawing is emphasised, as is the art of capturing the true essence and colour of a plant.

Techniques include drawing in pencil, pen and ink work and watercolour painting using wash and dry brush techniques.

Individual attention to participants will allow students to work at their own pace and skill level.

Included in the programme is a tutored visit to Kew's remarkable collections of botanical illustration in the Herbarium and the Shirley Sherwood Gallery of Botanical Art.

While this course is designed to follow on from 'Botanical illustration for beginners', it can also be taken as a stand-alone course.

Please note there is no weekend tuition during this course.

How to book Email adulted@kew.org with a contact number, or call 020 8332 5641

The 26th Annual Ayrshire Art Exhibition, in aid of Save the Children

Sunday 6th October - Sunday 17th November

will be out of place for at least three more years till 2022.

What's on at the National Galleries can be found at <https://www.nationalgalleries.org/whatson/exhibitions/>

A particularly special year for this annual exhibition, as it



is also the Centenary of Save the Children. The Art Exhibition has pictures with a huge variety of subjects, covering many genres and using many different mediums. The artists, who can each submit two pictures, are both

amateur and professional and the prices reflect this.

<http://www.themaclaurin.org.uk>

Maclaurin Art Gallery AYR

OPENING TIMES: The Maclaurin Gallery & Rozelle House

Monday to Saturday: 10.00am - 5.00pm; Sunday: 12noon - 5.00pm